



SUMMER 2016

2016 Annual General Meeting 14 May 2016

The New Executive and Board of Directors

President: Mike Neeland
VP: Jeni Christie
Sec/Treas: Darlene Berry
Training: Win Koch
Membership: Dylan Baker

Regional Directors:

Vanc. Is.: Wayne Wilson
Central: Randy Rorvik
South West: Rebecca Turner
South East: Meghan McKenzie
North East: Mike Neeland
North West: Jon Coutts

Thank you to Alison Rose, who has served as Treasurer since 2012. Also, appreciation goes out to Kelly Carnochan, Dwaine Brooke, Jerome Liboiron, Arnie Powell and Kathryn Farr, past board members, for their time, dedication, work and contributions to the Association.

The AGM minutes and financial statement have been posted on the BCTA website in Members Only.

TRAINING REPORT

New BCTA Certifications 2016:

Track Aware (TA)

Tracker (TK) formerly TK1

Advanced Tracker (AT) formerly TK2

Congratulations to all those who achieved their certifications. Photos are on the website.

Salt Spring Island TA 15-17 April 2016

Tim Fairbanks	TA	CRGSAR
Ian Elliott	TA	Conv. Vol.

Princeton TA & TK 29 April-1 May 2016

Anthony Chiew	TA
Richard Reeves	TA
Charlene Bell	TA

Comox Valley TK& AT 6-8 May 2016

Darlene Berry	AT	CVGSAR
Ole Edliq	AT	CVGSAR
Jim Barrett	AT	PGSAR
Scott Hare	AT	PGSAR
Randy Rorvik	AT	PGSAR
Robert Selsing	AT	OGSAR
Jane Whitticase	AT	PAGSAR
Wayne Wilson	AT	MSAR
Meghan McKenzie	AT	FVGSAR
Bill Tower	TK	CVGSAR
Rita Grant	TK	PAGSAR
Mike Riddalls	TK	PAGSAR

Comox Valley Instructor 13-15 May 2016

Mike Neeland	Juan De Fuca
Janice Frueh	Cowichan
Darlene Berry	Comox Valley
Rebecca Turner	Sunshine Coast
Jeni Christie	Juan De Fuca

British Columbia Tracking Association

www.bctracking.org

Meghan McKenzie Central Fraser Valley
Randy Rorvik Princeton
James Barrett Okanagan
Wayne Wilson Mechosin
Win Koch Comox Valley

Tracker Tales



BCTA Courses - For course details, see the website: www.bctracking.org

Last Call:

Terrace Track Aware & Tracker
3-5 June, Coordinators: Stephanie McLean & Jon Currie

Coming Courses - Pencil these dates in your calendar – they are in planning. Watch the website for announcements and details:

Vanderhoof 26-28 August
Nechako Valley Coordinator: Terry Thompson

Sunshine Coast 9-11 September
at Camp Olave.

Tumbler Ridge – Track Aware
23-25 September. Coordinator: Brandon Lewis

Coquitlam TBA – October?
Coordinator: Robert Sell

GSAR groups wishing to host a BCTA Tracking course - please see: www.bctracking.org > courses > How to Host a Course ([Here](#)) and contact your Regional Director.

+++++

“As it so often happens, those at the tactical level make it happen, regardless of the stupidity or short-sightedness of those appointed above them.”

Lords of the Sky by Dan Hampton

As always, Tracker Tales and pictures from your SAR or tracking experiences are welcome.

Sign Cutting and Tracking Methods Employed by the US Border Patrol by Jose J. Soto April 18, 2012

“There’s always sign.”

Sign is the physical evidence of any disturbance of the environment left behind by animals, humans or objects. The detection of this sign is called *sign cutting*. A person (or animal) cannot traverse ground without leaving some sort of telltale sign. This sign is what we’re trying to find and track. When most people think of tracking, they usually think of following footprints. But a trained tracker looks for more. He looks for kicked-over rocks, soil depressions, clothing fibers, changes in vegetation, changes in the environment, ambient noise or lack thereof, etc. Basically, the tracker looks for the disturbance — the sign — left behind by the person or persons being tracked.

Origin

Sign cutting and tracking has been around for millennia. It is a natural extension of hunting, both animals and people. On our continent, Native Americans perfected the art of sign cutting tracking both men and animals. To this day, there are special units of Native American law enforcement trackers protecting this nation. Many other rescue and law enforcement entities in the United States use tracking to locate people. Today, the tradition of tracking persons for law enforcement purposes is usually associated with the men and women of the United States Border Patrol.

The U.S. Border Patrol currently trains its agents in sign cutting, and even after the adoption of modern technology, sign cutting remains one of the most effective tools at its disposal to locate persons and gather intelligence. Sensors and cameras can be fooled and rendered ineffective, but as one of our seasoned agents likes to say: “The sign never lies.” In this article, I will touch upon the basics of sign cutting. I have to admit that I am by no means a master in this field. I do, however, use it on a daily basis as an enforcement tool. I take responsibility for mistakes in this article.

British Columbia Tracking Association

www.bctracking.org

Applications

Sign cutting and the tracking of persons have multiple uses.

These uses include, but are not limited to:

- Search & Rescue / Missing Person
- Perimeter / Property Security
- Intelligence Gathering
- Locating & Interdicting Subjects for Law Enforcement or military operations.

Who Are You Tracking

When you are sign cutting, it is important to identify your target. Are you looking for a lost or missing person? If not, are you looking for poachers or criminals? Your target determines what other precautions are needed. If it's a lost child or hiker, consider bringing food, water and an emergency blanket along to assist a person exposed to the elements.

If you're tracking poachers or criminals, then you have to factor in your security. Poachers and criminals do not want to be found, and will sometimes attempt to hide their sign or improvise countermeasures to avoid detection. For this scenario, it is advised never to track alone. At a minimum, communications gear (cell phone, radio) is advised, in addition to some form of personal protective equipment.

Sign Cutting Tools

Sign cutting and tracking actually require very little as far as gear goes. At the very least, you want to have a good flashlight and spare batteries, even when working during daylight hours. Tracking operations can drag for hours in some areas, and what began as a morning look-see can easily become a night tracking operation.

Before you go spend some serious cash on your tracking torch, consider the following: Modern LED flashlights with bazillion-candlepower ratings are actually not as effective as a plain old incandescent bulb flashlight. The brighter, whiter beam of the LED flashlights tends to wash out most footprints and other details. A regular incandescent bulb flashlight allows for more contrast when viewing the sign at night. Of course, if you are following sign at night, you should have two flashlights. Two is one, one is none.

When you cut for sign from a vehicle, you want to have a spotlight, or cutting light. As with the flashlights, avoid the ones that can be seen from Venus. You want to keep it at a low angle, for better contrast. This might make your arm go numb from hanging it from your car or truck window, but nothing says you can't tape it to a stick to make the task more comfortable for you.

Since tracking operations can drag for hours, you should bring basic sustenance items with you. Water, some food, a first aid kit, extra batteries, communications gear and anything else you might need for the next few hours. This is where you want

to keep it light. Adjust your load depending on your needs. That cool pack or tricked out rifle can get really heavy after a few hours.

Sign Interpretation And Tracking

As mentioned before, tracking involves following footprints, among other sign. Footprints give you an idea of who you're following. You must be able to read the footprints. The size of the footprint usually determines if you're following a man (larger, wider footprint), a woman (smaller, narrower footprint), or a child (small print). The number of footprints also lets you know how many you are following. The type of sole helps you stay on track when crossing other footprints, and helps you identify the person being tracked. The sole can be anything from a running *W*, a cowboy boot (plain with separate heel), a work boot or Vibram-type lug sole, a cross-trainer or Chuck Taylor or a waffle pattern (Mr. Peanut), among others.

The depression of the footprint can tell you if the person is large/heavy or if he or she is carrying a heavy load. The angle or dig determines the direction. When all you have is toe digs (half-moon shapes), then the person was running. When a person walks backwards, the dig is towards the heel.

Terrain & Environment

Depending on the terrain, a person may leave clear footprints or no footprints at all. Hard-packed terrain, and areas with good drainage, makes it difficult for a person to leave clearly defined footprints. This is when you look for other sign. Are there scrapes on the soil, similar to scrapes by coarse sandpaper? Are there rocks kicked over, with the moist (darker) area exposed? Is the vegetation disturbed in any way — broken branches, snapped twigs, crushed or stomped plants and leaves?

Another form of sign is clothing fibers stuck to vegetation. Don't limit yourself to specific forms of sign. You always want to look for other disturbances. In the early morning, if you look at the vegetation from an angle (towards the sun), is the dew disturbed in any way? Did it rain earlier? Disturbances on moist terrain stand out because the color or shine changes. Fresh prints on moist soil are not as 'shiny' as the rest of the soil.

The freshness of the sign or prints helps determine time. Are the prints sharp and very detailed? You might try stepping next to the print, and comparing it to yours. Does it look just as sharp? Usually, sharper prints are fresh, laid within an hour. Keep in mind that prints can look fresher or older than they are based on a number of factors. Prints in low areas and washes usually look fresher than they are, while prints exposed to rain and wind will look older.

British Columbia Tracking Association

www.bctracking.org

If you're protecting a ranch or any other property, it is a good idea to walk it to determine how long it takes to traverse the area. When you find sign, this helps you determine whether to get out and track the sign on foot or trying to leapfrog the sign and cutting for it at another location, once you have determined a direction of travel. People sometimes guide off structures or natural terrain features, making it easier to determine the person's travel route. Get to know the ranchers and property owners in the vicinity. They know the area and can provide invaluable intelligence.

Being familiar with the environment helps in many ways. Insects and animals help too. Are the crickets chirping away at night as they normally do? If they stopped, this usually indicates the presence of animals or people. Animals can indicate the presence of humans by their reaction. Most people think about barking dogs as an indicator, but other animals can also help you detect a disturbance.

One of our best trackers, a former Marine we call The General, was once on the trail of a group of illegal aliens at night when he lost their sign in a pasture. After walking for a few minutes in the direction the group was traveling, he came upon an open field with fresh sign for cattle, but the cows had moved about fifty yards away. He knew from experience that cows don't usually move at night. They like to hang out in the same spot. The only reason for the herd to move was to avoid something: the group. The General was able to reacquire the sign on the other side of the field where the cows had been, and eventually found the group. Know your environment.

Conclusion

There are tracking courses currently offered in many areas if you're interested in learning this skill. There's also a ton of information available in books and the web, but this is a skill that has to be practiced outdoors. This is the only way to understand it and gain experience to become proficient at it. The U.S. Border Patrol sometimes provides sign cutting and tracking courses to law enforcement and search and rescue agencies, as well as civilians. We also assist other agencies with tracking operations when called.

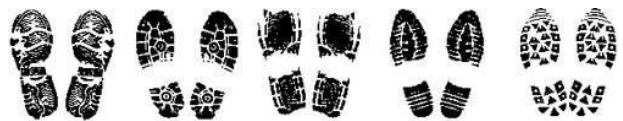
As with any skill, practice and patience makes for a better tracker. Good luck.



k7415803 www.fotosearch.com



k6773785 www.fotosearch.com



k3291300 www.fotosearch.com